

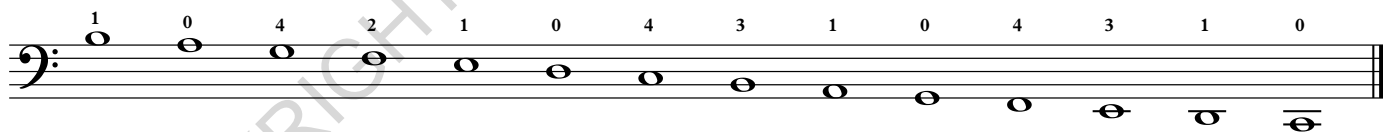
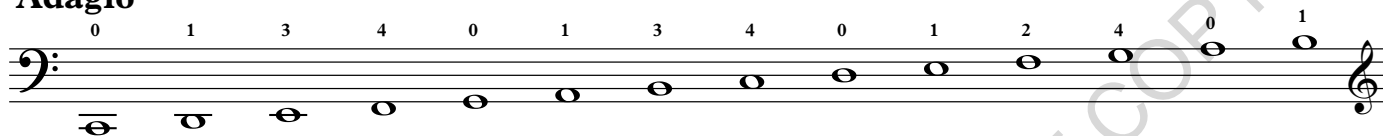
## Practicing Scales

Every scale should be practiced in the same way as C Major. At first, it may take up to two hours to play and work on one scale using all the strokes, arpeggios, double stops and the chromatic scale. After a lot of practice, it will take 40 - 45 minutes for each scale. It is important to use the same fingering when playing the scale both ascending and descending.

### C Major

*Begin by playing whole notes, using the entire bow, and counting 4 beats.*

#### Adagio



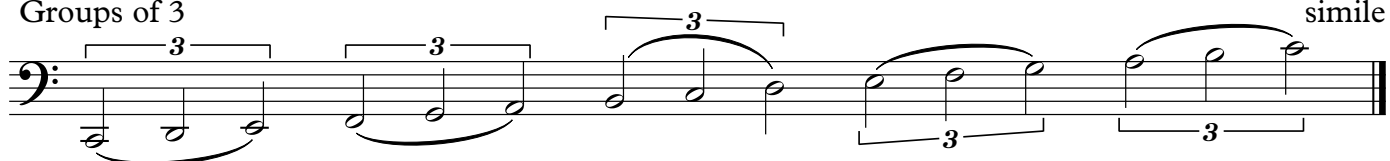
#### Legato strokes

*Maintain the same tempo through each grouping so that the exercises become progressively faster.*

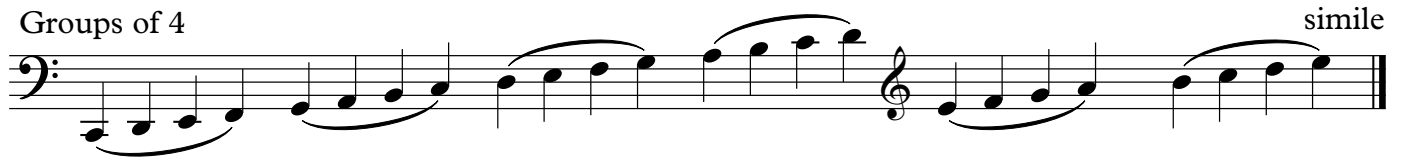
#### Groups of 2



#### Groups of 3

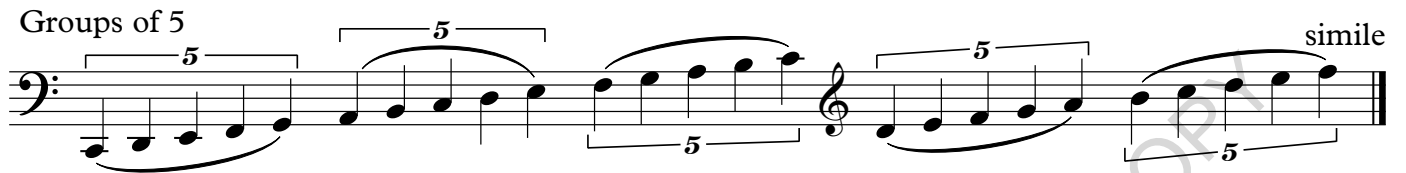


Groups of 4 simile



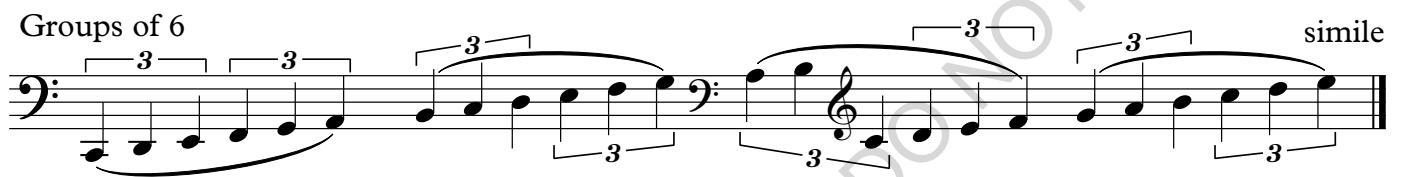
Musical notation for Groups of 4. The piece is written in bass and treble clefs. The bass line features a sequence of four eighth notes, followed by a group of four eighth notes beamed together, and then a group of four sixteenth notes beamed together. The treble line features a sequence of four eighth notes, followed by a group of four eighth notes beamed together, and then a group of four sixteenth notes beamed together. The word "simile" is written at the end of the piece.

Groups of 5 simile



Musical notation for Groups of 5. The piece is written in bass and treble clefs. The bass line features a sequence of five eighth notes, followed by a group of five eighth notes beamed together, and then a group of five sixteenth notes beamed together. The treble line features a sequence of five eighth notes, followed by a group of five eighth notes beamed together, and then a group of five sixteenth notes beamed together. The word "simile" is written at the end of the piece.

Groups of 6 simile



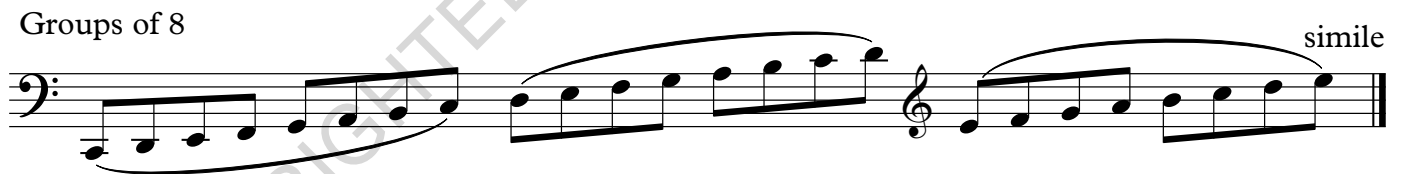
Musical notation for Groups of 6. The piece is written in bass and treble clefs. The bass line features a sequence of six eighth notes, followed by a group of six eighth notes beamed together, and then a group of six sixteenth notes beamed together. The treble line features a sequence of six eighth notes, followed by a group of six eighth notes beamed together, and then a group of six sixteenth notes beamed together. The word "simile" is written at the end of the piece.

Groups of 7 simile



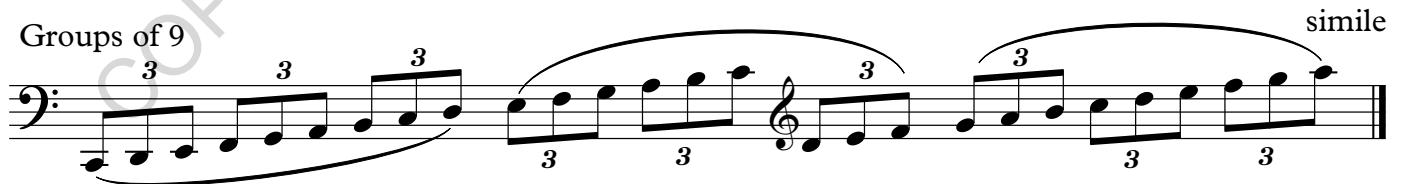
Musical notation for Groups of 7. The piece is written in bass and treble clefs. The bass line features a sequence of seven eighth notes, followed by a group of seven eighth notes beamed together, and then a group of seven sixteenth notes beamed together. The treble line features a sequence of seven eighth notes, followed by a group of seven eighth notes beamed together, and then a group of seven sixteenth notes beamed together. The word "simile" is written at the end of the piece.

Groups of 8 simile



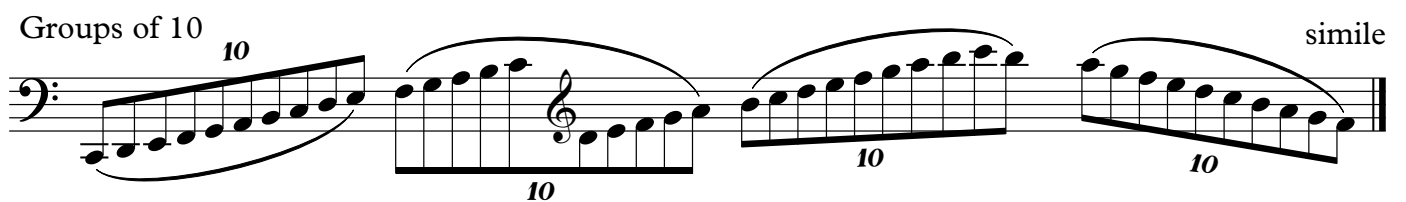
Musical notation for Groups of 8. The piece is written in bass and treble clefs. The bass line features a sequence of eight eighth notes, followed by a group of eight eighth notes beamed together, and then a group of eight sixteenth notes beamed together. The treble line features a sequence of eight eighth notes, followed by a group of eight eighth notes beamed together, and then a group of eight sixteenth notes beamed together. The word "simile" is written at the end of the piece.

Groups of 9 simile



Musical notation for Groups of 9. The piece is written in bass and treble clefs. The bass line features a sequence of nine eighth notes, followed by a group of nine eighth notes beamed together, and then a group of nine sixteenth notes beamed together. The treble line features a sequence of nine eighth notes, followed by a group of nine eighth notes beamed together, and then a group of nine sixteenth notes beamed together. The word "simile" is written at the end of the piece.

Groups of 10 simile



Musical notation for Groups of 10. The piece is written in bass and treble clefs. The bass line features a sequence of ten eighth notes, followed by a group of ten eighth notes beamed together, and then a group of ten sixteenth notes beamed together. The treble line features a sequence of ten eighth notes, followed by a group of ten eighth notes beamed together, and then a group of ten sixteenth notes beamed together. The word "simile" is written at the end of the piece.

Groups of 11

Musical notation for Groups of 11. The first staff shows an ascending scale in the bass clef, starting on G2 and ending on G3, with a fermata over the final note. The second staff shows a descending scale in the treble clef, starting on G4 and ending on G3, with a fermata over the final note. Both scales are marked with a fermata and the number 11. The word "simile" is written at the end of the second staff.

Groups of 12

Musical notation for Groups of 12. The first staff shows an ascending scale in the bass clef, starting on G2 and ending on G3, with a fermata over the final note. The second staff shows a descending scale in the treble clef, starting on G4 and ending on G3, with a fermata over the final note. Both scales are marked with a fermata and the number 12. The word "simile" is written at the end of the second staff.

Groups of 13

Musical notation for Groups of 13. The first staff shows an ascending scale in the bass clef, starting on G2 and ending on G3, with a fermata over the final note. The second staff shows a descending scale in the treble clef, starting on G4 and ending on G3, with a fermata over the final note. Both scales are marked with a fermata and the number 13. The word "simile" is written at the end of the second staff.

Groups of 16

Musical notation for Groups of 16. The first staff shows an ascending scale in the bass clef, starting on G2 and ending on G3, with a fermata over the final note. The second staff shows a descending scale in the treble clef, starting on G4 and ending on G3, with a fermata over the final note. Both scales are marked with a fermata and the number 16. The word "simile" is written at the end of the second staff.

Finally, play each scale with only two bow strokes, one ascending the scale and one descending.